

14-16
SEPTEMBER
2018

20TH
ANNIVERSARY



Jersey Regatta



Sailing Instructions

Classes 0, 1, 2, 3, QT & 5

Incorporating the
Spinlock IRC Channel Islands Regional Championships 2018

*Organised by the combined
yacht clubs of Jersey.*

Call: 00 44 (0)1534 732229

Email: info@jerseyregatta.com

Register at: www.jerseyregatta.com





Sailing Instructions

Classes 0, 1, 2, 3, QT & 5

Friday 14th September – Sunday 16th September 2018

Organising Authority:

Royal Channel Islands YC (RCIYC) jointly with St Helier YC (SHYC) & St Catherine's SC (SCSC)

All times Local Time (UTC+1)

Date	High water (St Helier)	Height (m)
Friday 14th September	1016	10.62
Saturday 15th September	1047	9.85
Sunday 16th September	1119	9.02

1. RULES

- 1.1 The Regatta will be governed by the rules as defined in the Racing Rules of Sailing;
- 1.2 The Prescriptions of the Royal Yachting Association will apply and are stated in full in Schedule 4;
- 1.3 Reference National Handicap for Cruisers (NHC) – a boat's handicap will be adjusted after every race;
- 1.4 Spinlock IR rule 2018 parts A, B and C including changes will apply to IRC-rated boats, except that Rule 22.4 will not apply. There will be no limitations on crew numbers or weight but a personal flotation device shall be carried for each person on board;
- 1.5 A minimum of two entries are required to constitute a class;
- 1.6 Self-provided class flags shall be flown from the boat's backstay, as follows:
 - Class 0 - numeral pennant 0
 - Class 1 - numeral pennant 1
 - Class 2 - numeral pennant 2
 - Class 3 - numeral pennant 3
 - Class QT – code flag Q
- 1.7 The Exoneration Penalty, Advisory Hearing, and Arbitration of the RYA Rules Disputes Procedures will be available. Decisions from RYA Arbitration may be referred to a protest committee, but cannot be re-opened or appealed.

2. NOTICES TO COMPETITORS

Notices to competitors will be posted on the official notice boards located in SHYC and the RCIYC.

3. CHANGES IN SAILING INSTRUCTIONS

Any change to the sailing instructions will be posted before 0800 on the day it will take effect except that any change to the schedule of races will be posted by 2000 hours on the day before it will take effect.

4. SIGNALS MADE ASHORE

Signals made ashore will be displayed at SHYC and the RCIYC.

5. SCHEDULE OF RACES

- 5.1 See 'Regatta Race Programme' Schedule 1.1;
- 5.2 No warning signal will be made after 1600 hours on both days.

6. CLASS FLAGS

(Race committee boat A (identified by an orange flag)

Race start sequences will use warning signals, as follows:

Class	Flag
0 - Sportsboat	Numeral pennant 0
1 - Cruiser/racer	Numeral pennant 1
2 - Cruiser/racer	Numeral pennant 2
3 - Cruiser	Numeral pennant 3
QT - Quarter Ton	Code flag Q
5 - Sport-catamaran	Numeral pennant 5

7. COURSE AREA

The course area will be within St Aubin's Bay and Jersey's coastal waters and will be contained entirely within Admiralty Chart 2669 (SCF 5604.4 & SCF5604.10).

8. COURSES

- 8.1 Friday – The course for the coastal race will be in St Aubin's Bay and Jersey's coastal waters. Course details and any other information will be promulgated by amendment no later than 1800 hours Wednesday 12th September;
- 8.2 Saturday and Sunday - Courses will be set in and/or to the south of St Aubin's Bay using a combination of numbered fixed marks as indicated in Schedule 2a and/or the laid inflatable marks A and C of a windward/leeward course where A is the windward mark and C is the leeward mark as indicated in Schedule 2b;
- 8.3 Where use is made of any of these marks the numbers or letters of the fixed marks and/or the laid inflatable marks will be displayed on a board on the race committee boat, to be read from left to right;
- 8.4 The background colour of a number will indicate the side on which the relevant mark is to be rounded or passed; 'green' means 'leave the indicated mark to starboard'; 'red' means 'leave the indicated mark to port';
- 8.5 When a Roman Numeral II is displayed at the end of the mark numbers and/or letters it means that the course is to be sailed twice round in **which case boats shall sail through the finishing line in the direction of the next mark to begin the second round.**

9. MARKS

Courses will use fixed marks except that marks A and C will be UBS orange cylindrical buoys and marks 15 and 16 will be orange pyramid buoys (See Schedules 2a and 2b). The start and finish marks will be orange buoys.

10. THE START

- 10.1 Races will be started as specified in rule 26, with the warning signal given 5 minutes before the starting signal;
- 10.2 The starting line will be between a mast or staff displaying an orange flag on the race committee boat marking the starboard end and the laid inflatable mark marking the port end of the line;
- 10.3 When an inner limit mark is laid, it shall be left to the same side as the race committee boat that it guards. **Boats shall not pass between that mark and the race committee boat at any time.** Any inner limit mark will not form part of the starting line transit;
- 10.4 A boat failing to start within the five minute period immediately following its starting signal will be scored Did Not Start (DNS). This changes rule A 4.1.

11. THE FINISH

The finishing line will be between a mast or staff displaying a blue flag on the race committee boat marking the port end and the laid inflatable mark marking the starboard end of the line.

12. TIME LIMITS – for all races, excluding any coastal race

12.1 Time limits and target times, in minutes, are as follows:

Classes	Race time limit	First mark time limit	1st boat's target time to finish
0, 1, 2, 3 & QT	120	30	80
5	60	20	30

12.2 If no boat has reached the first mark within the first mark time limit the race will be abandoned. Failure to meet the target time will not provide grounds for redress. This changes rule 62.1(a);

12.3 For classes 0, 1, 2, 3 and QT, boats failing to finish within forty minutes after the first boat in their class sails the course and finishes will be scored Did Not Finish (DNF) without a hearing. This changes rules 35, A4.1 and A5;

12.4 For Class 5, boats failing to finish within 30 minutes after the first boat in their class sails the course and finishes will be scored Did Not Finish (DNF) without a hearing. This changes rules 35, A4.1 and A5.

13. PROTESTS AND REQUESTS FOR REDRESS

13.1 Protest forms are available from the RCIYC and SHYC. Protests shall be delivered to the Regatta Office at SHYC or to the Steward at the RCIYC before the relevant protest time limit;

13.2 For competitors, the protest time limit shall be 90 minutes after the time that the last boat in the relevant class finishes in that class' last race of the day;

13.3 For the race committee and protest committee, the protest time limit shall be 180 minutes after the last boat has finished the last race of the day, irrespective of class;

13.4 Notices of protests will be posted in SHYC and the RCIYC within 30 minutes of the protest time limit to inform competitors of hearings to which they are parties or named as witnesses. Hearings will be held in SHYC or the RCIYC as soon as possible.

14. SCORING

14.1 The Low Point System of Appendix A will apply;

14.2 For the purposes of determining:

- the 'UBS Jersey Regatta – Best in Class' boat in each Class
- the Spinlock IRC Channel Islands Regional Champion in Classes 1 & 2
- Island ARK Quarter Ton Trophy

all races completed on 15th and 16th September will constitute a series for all classes, as follows:

14.2.1 When fewer than six races have been completed a boat's series score will be the total of her race scores;

14.2.2 When six races have been completed a boat's series score will be the total of her race scores excluding her worst score.

15. SAFETY REGULATIONS

15.1 All boats must check-in with the race committee boat for identification purposes before racing;

15.2 Any boat that retires from a race shall endeavour to notify the race committee or a race committee patrol boat as soon as possible by hail or on VHF Channel 8 and await an acknowledgement.

16. EQUIPMENT AND MEASUREMENT CHECKS

Any boat or equipment may be checked for compliance with class rules and/or these sailing instructions at any time.

On the water, a boat can be instructed by a race committee measurer to proceed immediately to a designated area for measurement checks.

17. **OFFICIAL BOATS** will be marked as follows:

17.1 Race committee boat A will fly an **orange** flag;

17.2 Patrol boats and other official boats will fly a **green** flag;

18. HAUL-OUT RESTRICTIONS

Boats shall not be hauled out during the event except in an emergency or with and according to the terms of prior written permission from the race committee. (Hauling out includes the use of legs, cradle berths and other forms of drying out that might otherwise be used over a low tide).

19. RADIOCOMMUNICATION

- 19.1 The race committee will maintain a listening watch on VHF Channel 8 both immediately prior to and whilst running racing. All boats equipped with a marine VHF radiotelephone should maintain watch on Channel 8 prior to and whilst racing;
- 19.2 The course to be sailed and a verbal countdown may be broadcast by the race committee boat on VHF Ch 8. Non-reception of any message by any boat shall not provide grounds for redress. This changes rules 62.1 and 62.2;
- 19.3 Except in an emergency, a boat that is racing shall not make voice or data transmissions and shall not receive voice or data communication that is not available to all boats.

20. RESULTS AND PRIZES

- 20.1 Provisional results will be posted on the Regatta notice boards at SHYC and the RCIYC as soon as possible after each day's racing;
- 20.2 Confirmed results will be announced and posted as soon as possible after 1930 hours Sunday 16th September in SHYC;
- 20.3 Details of trophies and prizes are shown in Schedules 1 and 3;

NOTE The Social Programme following Schedule 4 is included for information only.

21. RISK STATEMENT

Rule 4 of the Racing Rules of Sailing – Decision to Race states: 'The responsibility for a boat's decision to participate in a race or to continue racing is hers alone'.

Sailing is by its nature an unpredictable sport and therefore inherently involves an element of risk. By taking part in the event, each competitor agrees and acknowledges that:

- 21.1 They are aware of the inherent element of risk involved in the sport and accept responsibility for the exposure of themselves, their crew and their boat to such inherent risk whilst taking part in the event;
- 21.2 They are responsible for the safety of themselves, their crew, their boat and their other property whether afloat or ashore;
- 21.3 They accept responsibility for any injury, damage or loss to the extent caused by their own actions or omissions;
- 21.4 Their boat is in good order, equipped to sail in the event and they are fit to participate;
- 21.5 The provision of a race management team, patrol boats and other officials and volunteers by the event organiser does not relieve them of their own responsibilities;
- 21.6 The provision of patrol boat cover is limited to such assistance, particularly in extreme weather conditions, as can be practically provided in the circumstances;
- 21.7 It is their responsibility to familiarise themselves with any risks specific to this venue or this event drawn to their attention in any rules and information produced for the venue or event and to attend any safety briefing held for the event;
- 21.8 They are responsible for ensuring that their boat is equipped and seaworthy so as to be able to face extremes of weather; that there is a crew sufficient in number, experience and fitness to withstand such weather; and that the safety equipment is properly maintained, stowed and in date and is familiar to the crew.

22. INSURANCE

Each participating boat shall be insured throughout the event with valid third-party liability insurance with a minimum cover of £3,000,000 (three million pounds) or the equivalent in euros, per incident, to include racing.





Schedule 1 - Race Programme

FRIDAY - CLASSES 0, 1, 2, 3, & QT
SATURDAY/SUNDAY - CLASSES 0, 1, 2, 3, 5 & QT

(COMMITTEE BOAT A)

Friday 14th September – High Water: 1016 hours – Height: 10.62m

Warning Signal	Race	Class	
0825	SHYC Bill Coom Cup	Sportsboat	0
0825	RCIYC Tom Lee Memorial Trophy	IRC Cruiser/racer	1
0835	SHYC Cruising Trophy	IRC Cruiser/racer	2
0835	Day 1 Salver	Quarter Ton	QT
0835	RCIYC Mallard Trophy	NHC Cruiser/racer	3

Saturday 15th September – High Water: 1047 hours – Height: 9.85m

Warning Signal	Race	Class	
0915	RCIYC 1st Elfin Cup – 3 races back-to-back	Sportsboat	0
0915	SHYC Ken Budden Trophy – 3 races back-to-back	IRC Cruiser/racer	1
0925	SHYC Nautilus Trophy – 3 races back-to-back	IRC Cruiser/racer	2
0925	Day 2 Salver – 3 races back-to-back	Quarter Ton	QT
0935	RCIYC Morgan Grenfell 1 Trophy – 3 races back-to-back	NHC Cruiser/racer	3
0945	RCIYC Fairy Trophy – 3 races back-to-back	Sport-catamaran	5

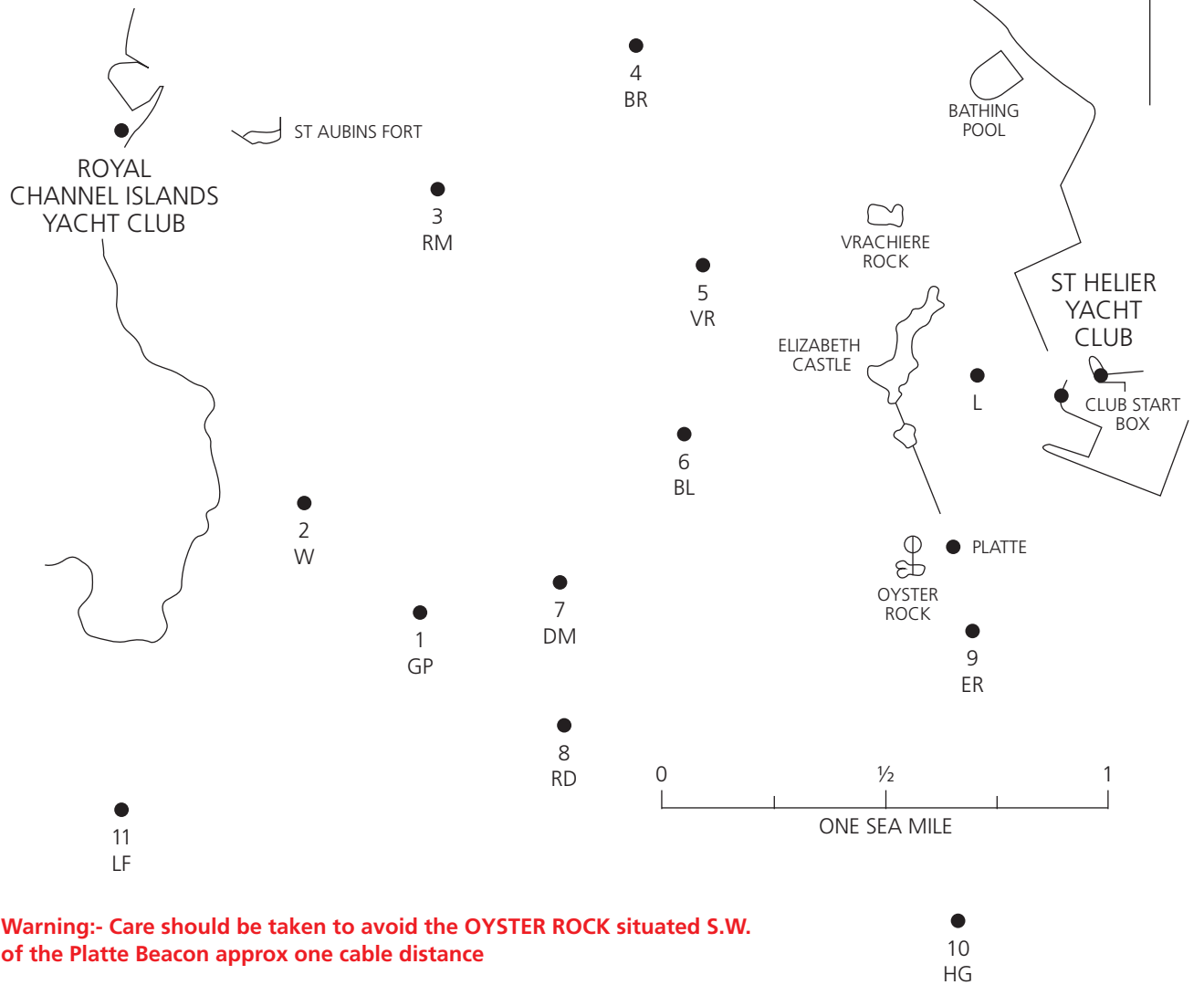
Sunday 16th September – High Water: 1119 hours – Height: 9.02m

Warning Signal	Race	Class	
0925	RCIYC Bolitho Urn – 3 races back-to-back	Sportsboat	0
0925	SHYC Commodore's Cup – 3 races back-to-back	IRC Cruiser/racer	1
0935	SHYC Tregear Cup – 3 races back-to-back	IRC Cruiser/racer	2
0935	Day 3 Salver – 3 races back-to-back	Quarter Ton	QT
0945	RCIYC Morgan Grenfell 2 Trophy – 3 races back-to-back	NHC Cruiser/racer	3
0955	RCIYC Lazard Trophy – 3 races back-to-back	Sport-catamaran	5

Note: For Saturday and Sunday back-to-back races, succeeding races will start as soon as possible after the finish of the preceding race in accordance with any time limit.



Schedule 2a



BUOYS, ETC., LISTED ABOVE HAVE BEEN ALLOTTED THE FOLLOWING LETTERS AND NUMBERS

Grunes Du Port Buoy	1 GP	Vrachiere Buoy	5 VR	East Rock Buoy	9 ER
West Mark	2	Baleine Mark	6 BL	Hinguette Buoy	10 HG
St Aubin's Racing Mark	3 RM	Diamond Buoy	7 DM	Les Fours Buoy	11 LF
Beach Rock Buoy	4 BR	Raudiere Buoy	8 RD	Limit Buoy	L

Participating yachts shall not make use of the deep water channels in such a way as to cause obstruction to large vessels using the port.



Schedule 2a (cont'd)

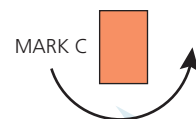
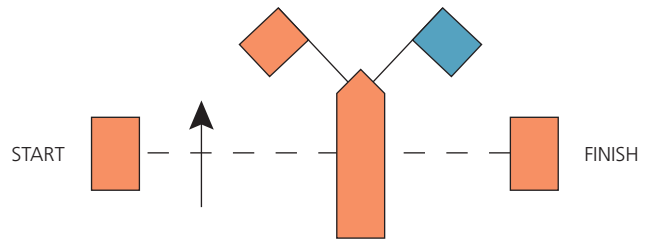
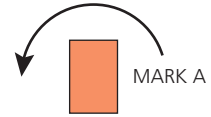
Marks as specified in Sailing Instruction 8.2

MARK ID	MARK
A	The laid windward mark of a windward/leeward course
C	The laid leeward mark of a windward/leeward course
1	Grunes du Port buoy (approx. pos'n 49°10.03'N, 02°09.12'W)
2	West Mark (approx. pos'n 49°10.42'N, 02°09.32' W)
3	St Aubin's Race Mark (approx. pos'n 49°11.10'N, 02°09.21'W)
4	Beach Rock buoy (approx. pos'n 49° 11.30'N, 02° 08.42'W)
5	Vrachère buoy (approx. pos'n 49°10.94'N, 02°08.10'W)
6	Baleine buoy (approx. pos'n 49°10.42'N, 02°08.22'W)
7	Diamond Rock buoy (approx. pos'n 49°10.12'N, 02°08.61' W)
8	Ruaudière buoy (approx. pos'n 49°09.77'N, 02°08.60'W)
9	East Rock buoy (approx. pos'n 49°09.97'N, 02° 07.30' W)
10	Les Hinguettes buoy (approx. pos'n 49°09.32'N, 02°07.30'W)
11	Les Fours buoy (approx. pos'n 49°09.60'N, 02°10.18'W)
12	Passage Rock buoy (approx. position 49°09.74'N, 02°12.28'W)
15	Mark 15 - an orange inflatable pyramid buoy situated close northwest of the Demie de Pas lighthouse (approx. position 49°09.10'N, 02°06.30'W)
16	Mark 16 - an orange inflatable buoy located approximately 1.25 nautical miles southwards of St Aubin's Bay. Position to be promulgated by Amendment no later than 1800hrs Wednesday 12th September.



Schedule 2b

WIND





Schedule 3 - Prizes

Prizes will be awarded as follows:

- 1.1 Perpetual trophies as indicated in the Race Programme (Schedule 1);
- 1.2 Place prizes will be awarded in each class, as follows:
 - When 2 boats are entered - first prize only
 - When 3 boats are entered - first and second prizes only
 - When 4 or more boats are entered - first, second and third prizes only;
- 1.3 The UBS Jersey Regatta Best-in-Class prizes will be awarded to the boats with the lowest series score in their class;
- 1.4 The Spinlock IRC Channel Islands Championship prizes will be awarded to the boats with the lowest series scores in Classes 1 & 2;
- 1.5 The Island ARK Trophy will be awarded to the Quarter Ton boat with the lowest series score.

The prize-giving will take place in St Helier YC as soon as possible after 1930 hours on Sunday 16th September.

Note that first place and special prizes only will be awarded at the prize giving. Second and third place prizes will be available in the Westward Room following the prize-giving.



Schedule 4 - RYA Prescriptions 2017

With effect from 1 January 2017, the RYA prescribes

Rule

3 Acceptance of the Rules

Add new rule 3.6: "Each competitor and boat owner shall ensure that their support persons comply with the rules"

5 Anti-Doping

The national authority procedural rules required by ISAF regulation 21.16 to implement the World Anti-Doping Code through ISAF Regulation 21 are the **RYA Anti-Doping Rules**, as published on the RYA website.

40 Personal Flotation Devices

When a rule requires a personal flotation device to be worn, the device shall comply with the specifications for the personal flotation devices that the boat is required to carry. If more than one specification applies, the personal flotation device worn shall comply with the highest of them.

50.4 Headsails

For the purposes of rules 50 and 54 and Appendix G, the difference between a headsail and a spinnaker is that, for a headsail, the distance measured between its **half leech point** and its **half luff point**, is less than 75% of its **foot length**. A sail tacked down behind the **foremost mast** is not a headsail.

Terms in **bold** are as defined in the Equipment Rules of Sailing.

67 Damages

1. Any issue of liability or claim for damages arising from an incident while a boat is bound by *The Racing Rules of Sailing* shall be subject to the jurisdiction of the courts and not considered by a protest committee.
2. A boat that takes a penalty or retires does not thereby admit liability for damages or that she has broken a *rule*.

70.5 Right of Appeal

1. RYA approval is not required to deny the right of appeal under rule 70.5(a).
2. The RYA will not consider approving the denial of the right of appeal under rule 70.5(b) unless
 - (a) the event is open only to boats entered by an organization affiliated to the RYA, a member of such an organization or a personal member of the RYA;
 - (b) the RYA decides there is good reason to approve; the cost of an international jury which would otherwise be appropriate for the event is not a good reason;
 - (c) the protest committee is approved by the RYA; and
 - (d) application to the RYA is made no later than one month before the notice of race is to be issued. In exceptional circumstances, the RYA may consider a later application.

A copy of the RYA letter of approval shall be displayed on the official notice board.

However, the denial of appeal shall not apply to a party to a hearing under rule 69.2, Misconduct, but the decision of the protest committee shall determine the results of the event.

78 Compliance with Class Rules; Certificates

A race committee may inspect or measure any **boat** or **personal equipment**, at any time.

Terms in **bold** are as defined in the Equipment Rules of Sailing.

86.3 Rule Changes

An organizing authority wishing to develop or test alternative racing rules shall obtain prior approval from the RYA. An application form is available from the RYA. The notice of race shall include the approved alternative rules. The organizing authority shall promptly report the results of the development or test to the RYA.

88.2 Changes to National Authority Prescriptions

Notices of race and sailing instructions shall not change a prescription of the RYA. However, when an international jury has been appointed for an event, only the prescriptions to rules 3, 5, 67, 86.3 and 88.2 shall apply.

APPENDIX G IDENTIFICATION ON SAILS

G1 Identification, Specifications, Positioning

The requirements of rules G1.1, G1.2 and G1.3 apply to all British owned boats except that:

1. under rule G1.1(a), class insignia need not be carried when the boat carries a sail number from one of the series specified in prescription G2-1, G2-2, G2-3 or G2-4 below.
2. under rule G1.1(c), a sail number of more than four digits may be carried.
3. under rule G1.1(c), for boats other than World Sailing ISAF classes, one of the authorities specified in G2 below shall allot an appropriate sail number.
4. under rule G1.2(b), the height of a letter included as part of a sail number shall be the same as any numerals included in the sail number.
5. under rule G1.3(c), the national letters may be placed in front of or above the sail numbers.

G2 Series of Sail Numbers and Issuing Authorities Approved by the RYA

1. Y, M, N, T, A, L and X series issued by the RYA.
2. R series issued by the Royal Ocean Racing Club.
3. C series issued by the Clyde Yacht Clubs Association.
4. National class series issued by the RYA.
5. Series issued by RYA affiliated class associations and approved by the RYA.
6. Series issued by a builder of a new class and approved by the RYA.

APPENDIX R PROCEDURES FOR APPEALS AND REQUESTS

R2.1 Submission of Appeal

Rule R2.1 shall apply except as changed by the following:

1. The appellant shall notify RYA Racing stating an intention to appeal within the relevant time limit in rule R2.1. No details are needed at this stage.
2. Within 15 days thereafter, the appellant shall send to the RYA a completed appeal form with a copy of the protest committee's decision and other documents listed in rule R2.2, all as far as reasonably possible.
3. Unless the appellant is a personal member of the RYA, an appeal fee, stated on the appeal form, is payable to the RYA and shall be sent with the appeal form.

The appeal form is available from www.rya.org.uk/racingrules or by request to RYA Racing.

R2.4 Failure to Comply with Procedures for Appeal or Request

Add new rule R2.4

If the appellant does not comply with rule R2.1 as prescribed or the protest committee does not comply with rule R2.3, the RYA will refuse to hear the appeal unless there are exceptional circumstances. If other parties to the protest or the protest committee do not meet the requirements of the procedure, the RYA may decide the appeal as it thinks fit.

WORLD SAILING REGULATION 20 ADVERTISING CODE

20.2.3 Right to Display Advertising on a Boat

When the right to display advertising on a boat is subject to prior authorisation by the national authority in accordance with regulation 20.2.3.3, the approval of the RYA is automatically granted provided that such advertising is permitted by the relevant rules of the class, rating system or handicapping system.

20.8.2 Fees

When the person in charge of a boat chooses to display Advertising, the RYA will not impose a fee as permitted by regulation 20.8.2.





NOTE The RYA prescription to rule 88.2 was approved by World Sailing on 26 July 2016.





Social Programme

Thursday 13th to Sunday 16th September

Date	Function	Time	Venue
Thursday 13th September	Welcome & Reception Complimentary refreshments on arrival	1900 hours	St Helier YC
	Skippers' briefing <ul style="list-style-type: none"> • Classes 4, 6, 7, 8, 9 & W • Classes 0, 1, 2, 3, 5 and QT 	1915 hours 1930 hours	
Friday 14th September	Combined Clubs' Commodores' Reception Complimentary drink on arrival Buffet supper	1900 hours	RCIYC 
Saturday 15th September	Regatta Party Night (tickets available from the Regatta office, St Helier YC)	1900 hours	RCIYC 
Sunday 16th September	Complimentary drink on arrival Light buffet Prize-giving - 1st place prizes & trophies* Close	1830 hours	St Helier YC 

*Please note that only trophies, first place and any special prizes will be presented at the prize-giving. Second and third place prizes will be available for collection in the Westward Room following the prize-giving.